

# Geography: Year 1

## B: Human and Physical Geography

Previously, I have learnt...

In Year 1, I am learning...

In the future, I will learn...

My future...

\* About some changes

• To complete a simple weather chart and answer questions about the weather in the UK

\* To explain the main features of a hot and cold place and locate a hot and cold region of the world

\* How environments vary from one another

• To explain how the weather changes with each season in the UK.

\* To name key features associated with a town or village, e.g. factory, shopping centre, school, park.

\* About similarities and differences between places

• To make plausible predictions about what the weather will be like later in the day, or tomorrow in the UK

\* To draw similarities and differences between different locations in the world.

\* Features of my own environment

\* To describe what the weather in my local area is like today and might be like tomorrow.

\* To describe key features of a place using words like, beach, coast, forest, hills, mountain, ocean, valley.

- Town planner
- Teacher
- Landscape architect
- Tourism officer
- Nature conservation officer
- Transport planner
- Cartographer (mapping)
- Journalist
- Weather forecaster

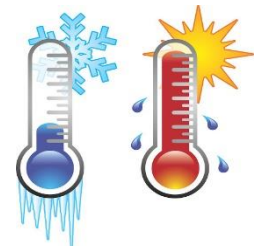
changes  
similarities  
differences  
hot  
cold



weather  
predict  
chart  
season  
year  
climate



environment  
landmarks  
features  
town  
village  
impact



Geography: Year 2  
B: Human and Physical Geography

Previously, I have learnt...

In Year 2, I am learning...

In the future, I will learn...

My future...

- To complete a simple weather chart and answer questions about the weather in the UK
- To make plausible predictions about what the weather will be like later in the day or tomorrow in the UK
- To explain how the weather changes with each season in the UK.

\*To explain the main features of a hot and cold place and locate a hot and cold region of the world

\* To name key features associated with a town or village, e.g. factory, shopping centre, school, park.

\*To draw similarities and differences between different locations in the world.

\* To describe key features of a place using words like, beach, coast, forest, hill, mountain, ocean, valley.

\*To explain what facilities a town or village might need

\* To recognise and explain when people spoil an area or make it better

• How volcanoes are created

• The key events of a volcanic eruption

\* That the earth's surface is made up of tectonic plates

• How earthquakes are created

\* The parts of a river

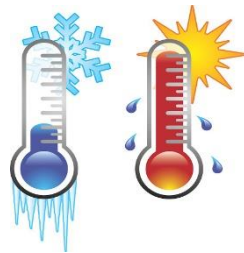
\* The meaning of erosion, transportation and deposition

- Town planner
- Teacher
- Landscape architect
- Tourism officer
- Nature conservation officer
- Transport planner
- Cartographer (mapping)
- Journalist
- Weather forecaster

weather  
predict  
chart  
season  
year  
climate



environment  
landmarks  
features  
town  
village  
impact



earthquake  
volcano  
river  
erosion  
transportation  
deposition



Geography Year 3  
B: Human and Physical Geography

Previously, I have learnt...

In Year 3, I am learning...

In the future, I will learn...

My future...

\* To explain the main features of a hot and cold place and locate a hot and cold region of the world

\* How volcanoes are created

\* About various strategies and initiatives used throughout the world to improve the environment

\* To name key features associated with a town or village, e.g. factory, shopping centre, school, park.

\* The key events of a volcanic eruption

\* why people might choose to live in a village rather than a city

\* To draw similarities and differences between different locations in the world.

\* That the earth's surface is made up of tectonic plates

\* Why people are attracted to living in cities

\* To describe key features of a place using words like, beach, coast, forest, hill, mountain, ocean, valley.

\* How earthquakes are created

\* How people are trying to manage their environment to improve it and keep them safe

\* To explain what facilities a town or village might need

\* The parts of a river

• The features of cities and villages

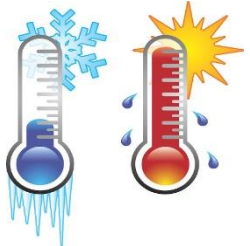
\* To recognise and explain when people spoil an area or make it better

\* The meaning of erosion, transportation and deposition

\* Ways in which humans have both improved and damaged the environment

- Town planner
- Teacher
- Landscape architect
- Tourism officer
- Nature conservation officer
- Transport planner
- Cartographer (mapping)
- Journalist
- Weather forecaster

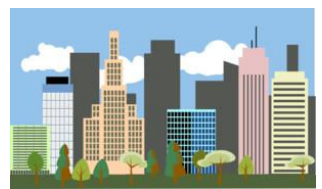
environment  
landmarks  
features  
town  
village  
impact



earthquake  
volcano  
river  
erosion  
transportation  
deposition



improvements  
city  
amenities  
pollution  
Global Warming  
natural resources



# Geography Year 4

## B: Human and Physical Geography

Previously, I have learnt...

In Year 4, I am learning...

In the future, I will learn...

My future...

\* How volcanoes are created

\* About various strategies and initiatives used throughout the world to improve the environment

\* The difference between human and physical features of a location

\* The key events of a volcanic eruption

\* why people might choose to live in a village rather than a city

\* The impact of human and physical features of a place on the local population

\* That the earth's surface is made up of tectonic plates

\* Why people are attracted to living in cities

\* How the context of features, such as climate and historical events, impact on the local population

\* How earthquakes are created

\* How people are trying to manage their environment to improve it and keep them safe

\* How the context of features, such as climate and historical events, impact on wildlife

\* The parts of a river

\* The features of cities and villages

\* How a location fits into its wider geographical location

\* The meaning of erosion, transportation and deposition

\* Ways in which humans have both improved and damaged the environment

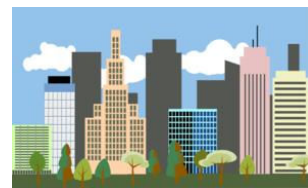
\* Human, physical and economical features of a location

- Town planner
- Teacher
- Landscape architect
- Tourism officer
- Nature conservation officer
- Transport planner
- Cartographer (mapping)
- Journalist
- Weather forecaster

earthquake  
volcano  
river  
erosion  
transportation  
deposition



improvements  
city  
amenities  
pollution  
Global Warming  
natural resources



global  
population  
wildlife  
historical  
economical  
arable  
pastoral



# Geography Year 5

## B: Human and Physical Geography

Previously, I have learnt...

In Year 5, I am learning...

In the future, I will learn...

My future...

\* About various strategies and initiatives used throughout the world to improve the environment

\* why people might choose to live in a village rather than a city

\* Why people are attracted to living in cities

\* How people are trying to manage their environment to improve it and keep them safe

\* The features of cities and villages

\* Ways in which humans have both improved and damaged the environment

\* The difference between human and physical features of a location

\* The impact of human and physical features of a place on the local population

\* How the context of features, such as climate and historical events, impact on the local population

\* How the context of features, such as climate and historical events, impact on wildlife

\* How a location fits into its wider geographical location

\* Human, physical and economical features of a location

\* To describe the human features of different places around the world

\* How to identify human features of a place on digimaps and physical maps

\* How to identify mountain ranges on maps and atlases

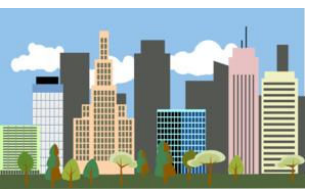
\* The meaning of the term sustainable development

\* A variety of examples of sustainable development

\* The names of mountain ranges of North and South America

- Town planner
- Teacher
- Landscape architect
- Tourism officer
- Nature conservation officer
- Transport planner
- Cartographer (mapping)
- Journalist
- Weather forecaster

improvements  
city amenities  
pollution  
Global Warming  
natural resources



global population  
wildlife  
historical  
economical  
arable  
pastoral



sustainable development  
mountain range  
North America  
South America  
USA  
states





Geography Year 6  
B: Human and Physical Geography

Previously, I have learnt...

In Year 6, I am learning..

In the future, I will learn...

My future...

\* The difference between human and physical features of a location

\* To describe the human features of different places around the world

• About rocks, weathering and climate

\* The impact of human and physical features of a place on the local population

\* How to identify human features of a place on digimaps and physical maps

\* The change in climate from the Ice Age to the present

\* How the context of features, such as climate and historical events, impact on the local population

\* How to identify mountain ranges on maps and atlases

• About the use of natural resources

\* How the context of features, such as climate and historical events, impact on wildlife

\* The meaning of the term sustainable development

\* How human and physical processes can change landscapes

\* How a location fits into its wider geographical location

\* A variety of examples of sustainable development

• How glaciers are formed

\* Human, physical and economical features of a location

\* The names of mountain ranges of North and South America

\* About geographical timescales

- Town planner
- Teacher
- Landscape architect
- Tourism officer
- Nature conservation officer
- Transport planner
- Cartographer (mapping)
- Journalist
- Weather forecaster

global population  
wildlife  
historical  
economical  
arable  
pastoral



sustainable development  
mountain range  
North America  
South America  
USA  
states



weathering  
Ice Age  
natural resources  
glacier  
processes  
hydrology  
tectonics

