

Geography—geographical study

- Different types of food are grown in different areas of the world.
- Countries produce food that suits the geographical conditions, including land and climate. Some places specialise in particular food types.
- Countries then trade with each other by importing and exporting goods so there is more variety.
- Foods are transported quickly and carefully to keep them fresh.
- Food miles is the distance food is transported from the time of its production until it reaches the consumer. Food miles are one factor used when assessing the environmental impact of food, including the impact on global warming.



Food Miles calculator



Trade



Vocabulary

food	import
miles	production
trade	travel
climate	pollution
geographical	consumer
atlas	air
map	world
produce	export

What is trade?



Art: Drawing and Painting

- Paul Cezanne was a French artist who encompassed food into many of his drawings.
- He used small paintbrush strokes to build up texture in his work.
- Texture in a painting is the feel of the artwork e .g. It can be based on the paint, and its application and manipulation or the addition of materials such as metal, wood, lace, leather and sand.
- Texture in painting stimulates two different senses, visual and tactile.



Paul Cezanne and a piece of his artwork.

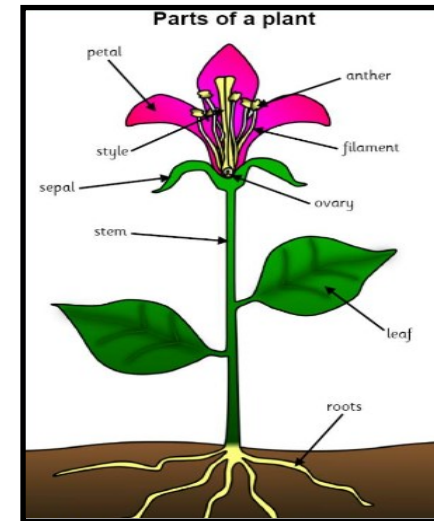


Vocabulary

drawing	manipulation
art	application
painting	material
acrylic	strokes
texture	brush
tactile	building

Science: Plants

- Plants need air, light, warmth, water and nutrients to be healthy.
- They make their own food through photosynthesis.
- Most healthy plants are upright with green leaves.
- Plants have roots, a stem, leaves and sometimes a flower. Each part has different function.
- Pollination is the act of transferring pollen grains from the male anther of a flower to the female stigma.



Vocabulary

nutrients	air
plant	water
flower	growth
stem	survival
leaf	pollination
roots	lifecycle

What do plants need to grow?



The lifecycle of a plant.



What is a plant?



Painting techniques

