

History: Key Knowledge

- ♦ The Industrial Revolution began in Britain in the mid-18th century.
- ♦ It was a time of great change—huge amounts of items (mainly textiles) started being produced in factories and lots of people moved from the countryside to the city to work.
- ♦ Queen Victoria ruled Great Britain for some of this time(1837–1901) and we refer to her reign as the 'Victorian Era'.
- ♦ Victorian times were very difficult for children, and women, but great change began during these times. Dr Thomas Barnardo and The Suffragettes were key in inciting change.

Queen Victoria



Dr Thomas Barnardo



Suffragettes

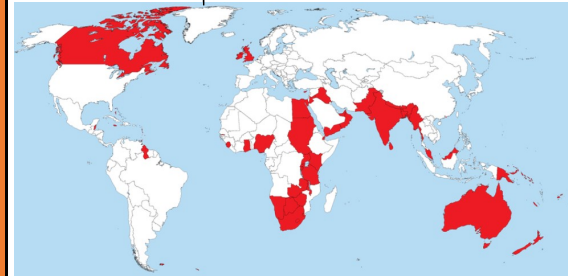
Vocabulary

Victorians	British Empire
reign	slum
suffragette	textiles
workhouse	Barnardo
social reformer	suffragist
coal	oppression
factory	suffrage
affluent	
poverty	

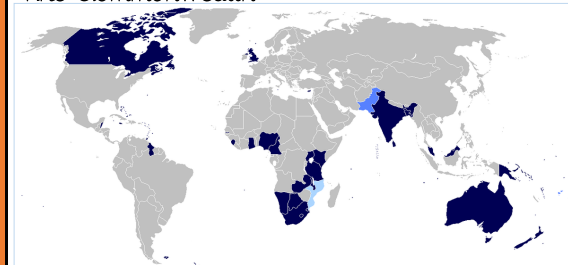
Geography

- ♦ The British Empire refers to colonies that British armies invaded and therefore classed as belonging to Britain.
- ♦ During Queen Victoria's reign, The British Empire was hugely powerful – 1/3 of the world belonged to The British Empire, including: Canada, The Caribbean, Australia, America and India,
- ♦ After the World Wars, The British Empire began to decline as the colonies wanted freedom and independence. The closest thing we have nowadays is The Commonwealth.

The British Empire



The Commonwealth

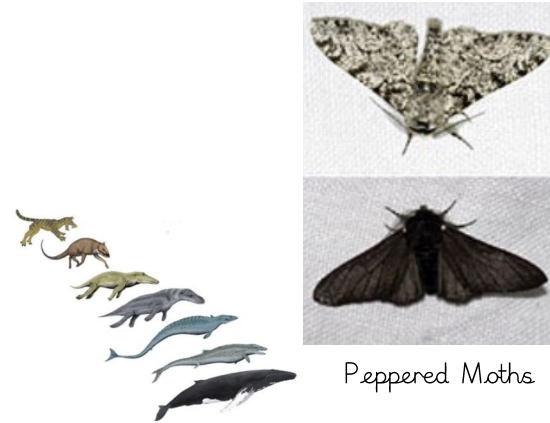


Vocabulary

Britain	power
British	ambition
empire	coordinate
colony	latitude
colonies	longitude
trade	
Commonwealth	

Science: Key Knowledge

- ♦ Evolution means the process of living things changing over time. It was first put forwards as a theory by Charles Darwin. Fossils provide information about living things that inhabited the Earth millions of years ago
- ♦ Living things produce offspring of the same kind, but normally offspring vary and are not identical to their parents
- ♦ Animals and plants are adapted to suit their environment in different ways and that adaptation may lead to evolution.
- ♦ During the Industrial Revolution, the shortest example of evolution took place (although some people debate whether it was truly evolution) - to the peppered moth.



Peppered Moths

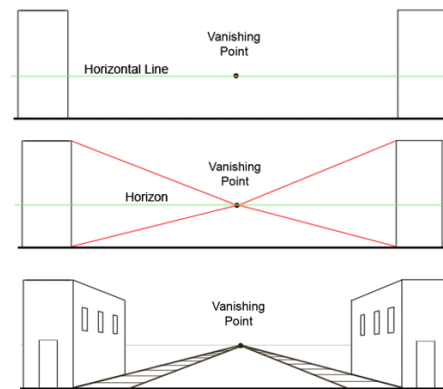
The Evolution of the Whale

Vocabulary

evolution	gender
inheritance	genes
offspring	inhabited
adaptation	natural selection
chromosomes	extinct
organism	

Art: Key Knowledge

- ♦ Artists use perspective to represent three-dimensional objects on a two-dimensional surface.
- ♦ During the Victorian Era, the main style of art was realism. Realism describes paintings done in almost a photographic way. Drawing with perspective helps create realistic images.



Vocabulary

realism	(3D) three dimensional
perspective	vanishing point
(2D) two dimensional	

