



\* To use a range of materials, including natural and man-made to create a few collage

\* The definition of the word collage and a variety of types of collage

\* That a range of materials can be added to create a collage

\* To create sculptures through modelling and casting

\* To create collages with a purpose - such as, creating an animal face

• To express my ideas through collage

\* To manipulate materials to make a sculpture with meaning

• How to tear and cut paper, and glue and stitch to attach materials

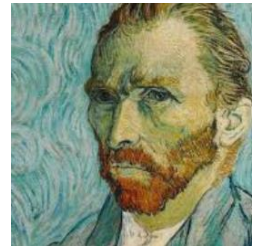
\* How to cut, tear and attach different materials efficiently

\* To roll, pinch, pull and squeeze clay to shape it

\* To create holes, hollows and marks in the clay using named tools

- Art Directors
- Fine Artists
- Fashion Designer.
- Floral Designers
- Graphic Designer
- Architect
- Interior Designers
- Jewellery Designer
- Animator
- Relaxation
- Hobby

collage  
natural  
man-made  
purpose  
stitch  
attach  
pleasing



collage  
spacing  
even  
crowded  
materials  
tear  
attach



pinch  
squeeze  
clay  
roll  
coil  
hollow  
smooth





\* The definition of the word collage and a variety of types of collage

\* That a range of materials can be added to create a collage

• To express my ideas through collage

\* How to cut, tear and attach different materials efficiently

\* To create sculptures through modelling and casting

\* To manipulate materials to make a sculpture with meaning

\* How to work efficiently and effectively with clay using techniques to manipulate clay

\* To shape clay using my hands to create a product

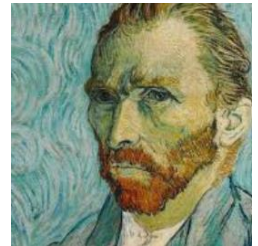
\* To roll, pinch, pull and squeeze clay to shape it

\* To create holes, hollows and marks in the clay using named tools

\* To use a rolling pin and slab to smooth clay

- Art Directors
- Fine Artists
- Fashion Designer.
- Floral Designers
- Graphic Designer
- Architect
- Interior Designers
- Jewellery Designer
- Animator
- Relaxation
- Hobby

collage  
spacing  
even  
crowded  
materials  
tear  
attach



manipulate  
model  
cast  
modelling  
casting  
sculpture  
Modroc



pinch  
squeeze  
clay  
roll  
pull  
hollow  
smooth



Previously, I have learnt...

In Year 3, I am learning...

In the future, I will learn...

My future...

\* To create sculptures through modelling and casting

\* How to work efficiently and effectively with clay using techniques to manipulate clay

\* To sculpt with wire, creating models which show movement

- Art Directors
- Fine Artists
- Fashion Designer.
- Floral Designers
- Graphic Designer
- Architect
- Interior Designers
- Jewellery Designer
- Animator
- Relaxation
- Hobby

\* To manipulate materials to make a sculpture with meaning

\* To shape clay using my hands to create a product

\* To sculpt with clay with increasing ease, making a model close to my intended design

\* To roll, pinch, pull and squeeze clay to shape it

• To roll balls, snakes and coil clay

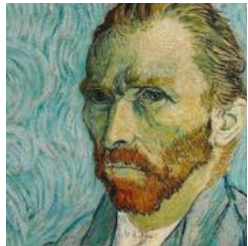
\* To create holes, hollows and marks in the clay using named tools

\* To carve and subtract when working with clay

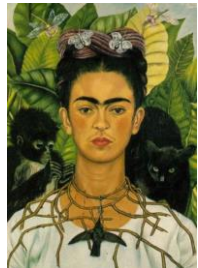
\* To use a rolling pin and slab to smooth clay

• To add to clay

manipulate  
model  
cast  
modelling  
casting  
sculpture  
Modroc

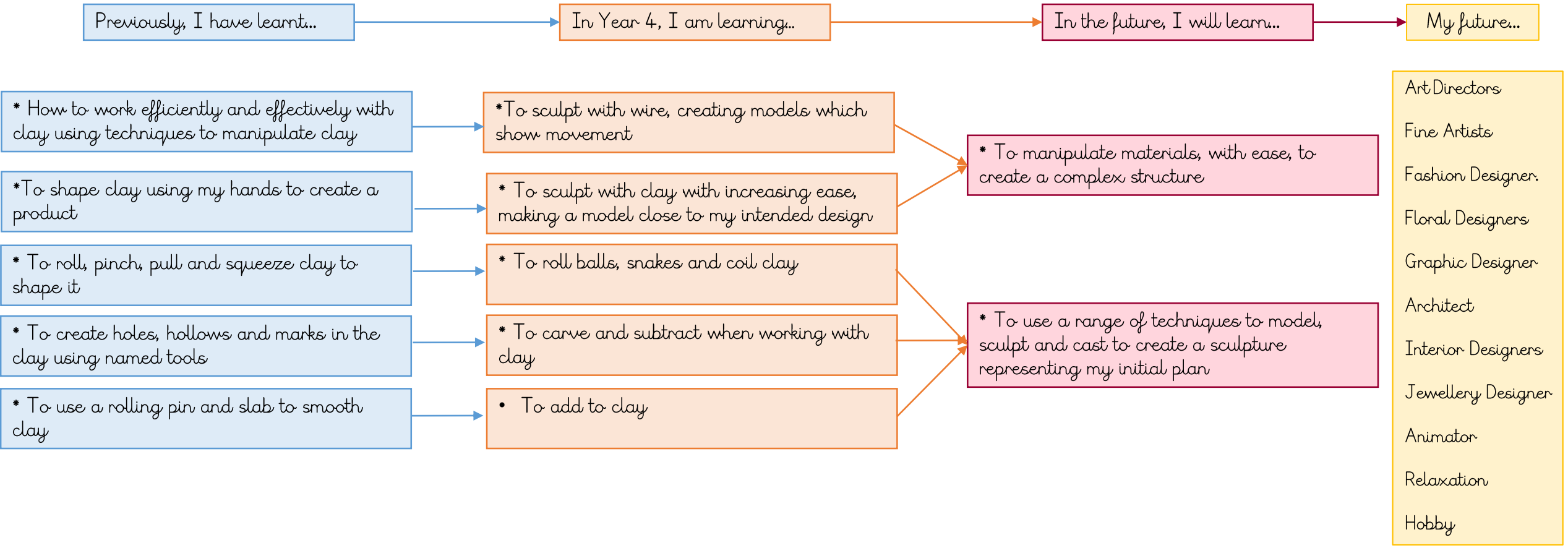


pinch  
squeeze  
clay  
roll  
pull  
hollow  
smooth

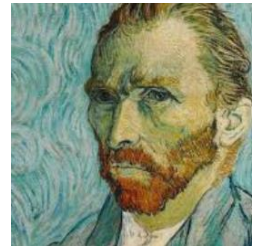


sculpt  
mouldable  
wire  
wrapping  
joining  
hollowing  
bending





pinch  
squeeze  
clay  
roll  
pull  
hollow  
smooth



sculpt  
mouldable  
wire  
wrapping  
joining  
hollowing  
bending



manipulate  
materials  
structure  
techniques  
Modroc  
cast  
casting





\* To sculpt with wire, creating models which show movement

\* To sculpt with clay with increasing ease, making a model close to my intended design

\* To roll balls, snakes and coil clay

\* To carve and subtract when working with clay

• To add to clay

\* To manipulate materials, with ease, to create a complex structure

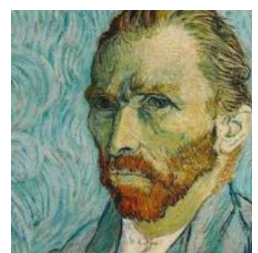
\* To use a range of techniques to model, sculpt and cast to create a sculpture representing my initial plan

\* To sculpt clay with ease, creating complex and intricate structures

\* To carve intricate designs when sculpting clay

- Art Directors
- Fine Artists
- Fashion Designer.
- Floral Designers
- Graphic Designer
- Architect
- Interior Designers
- Jewellery Designer
- Animator
- Relaxation
- Hobby

sculpt  
mouldable  
wire  
wrapping  
joining  
hollowing  
bending



manipulate  
materials  
structure  
techniques  
Modroc  
cast  
casting



intricate  
complex  
carve  
carving  
designs  
complexities





\* To manipulate materials, with ease, to create a complex structure

\* To independently sculpt clay with ease, creating complex and intricate structures

\* To become proficient in working with a wide range of media when creating 3D art

\* To use a range of techniques to model, sculpt and cast to create a sculpture representing my initial plan

\* To use a range of tools to model, sculpt and construct, independently chosen

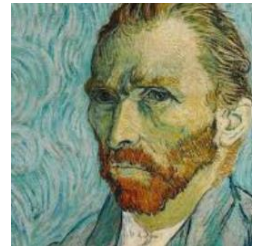
\* To carve intricate designs when sculpting clay

\* To choose tools based on effects created by different tools

\* To become proficient in using a variety of tools for specific effects

- Art Directors
- Fine Artists
- Fashion Designer.
- Floral Designers
- Graphic Designer
- Architect
- Interior Designers
- Jewellery Designer
- Animator
- Relaxation
- Hobby

manipulate materials  
structure  
techniques  
Modroc  
cast  
casting



intricate  
complex  
carve  
carving  
designs  
complexities



form  
base  
pedestal  
column  
balance  
proportion  
mass

